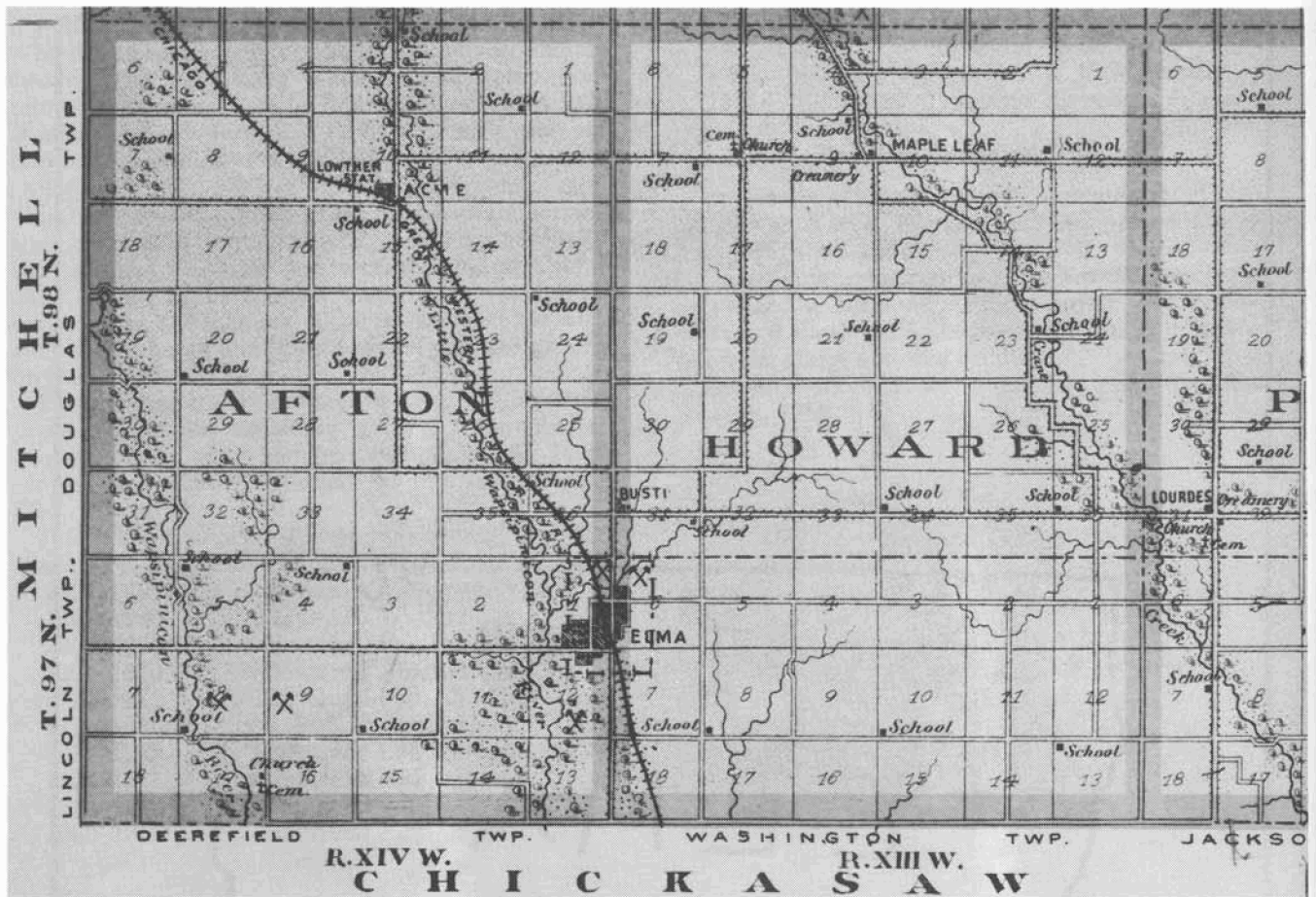


Schools



submitted by Brenda Lentz



The school system of Elma was composed of public, parochial and many rural schools.

In 1857 a portion of Afton and Howard townships constituted one school district. There was only one school in this district.

Referring to the map of 1903, we find rural school-houses dotting the countryside.

In Chapter 1 of this book, you have read an account of early schooling as written by J. W. Conway.

From the book, *History of Chickasaw and Howard Counties*, we find the following enrollment figures of the schools in 1919.

Elma had 1 male teacher and 6 female teachers. Of persons between ages 5 and 21 years of age, 168 were

males and 172 were females. One hundred twenty-seven students were enrolled in school and 105 attended.

Afton Township had one male teacher and 12 female teachers. Of persons between 5 and 21 years of age 121 were males and 127 females. There were 170 enrolled in school and 107 attended.

In Howard Township, there were 15 female teachers. Of persons between 5 and 21 years of age there were 205 males and 164 females; 232 were enrolled in school and 134 attended.

The average monthly wage for teachers in Howard County in 1917 was \$101.80 for males and \$52.75 for females.

The Rural School

The country school was a one-room building, housing grades kindergarten through eight, all taught by one teacher. The building usually had a small entrance hall that served as cloak-room and had facilities for an urn for drinking water, a wash basin for cleaning hands, and shelves for dinner pails.

The school was heated in earlier days by a pot-bellied

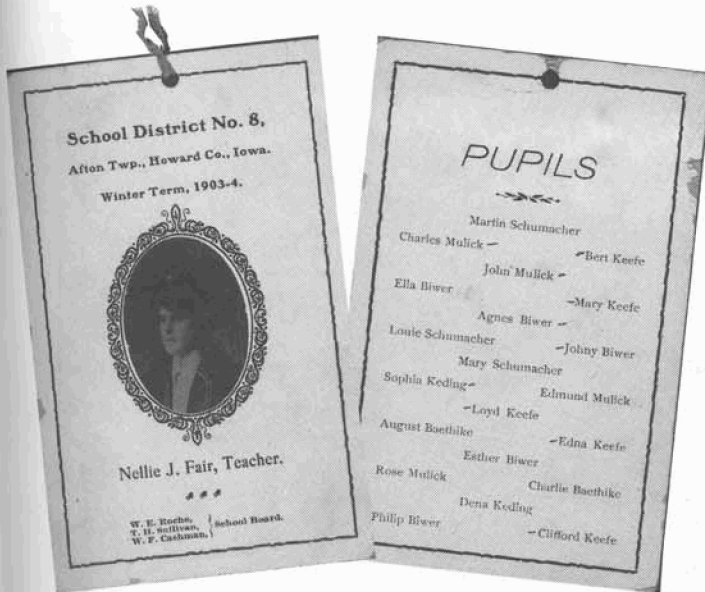
stove, faithfully stuffed with coal and wood, at the hands of the teacher or a strong older student. Some schools had an attached coal shed to the rear of the school, while others had their fuel supply stored in a shed away from the school building. There were no lights in the older schools and very few could boast of a telephone. Most of the school extracurricular activities



Howard 12—Rural School, May 28, 1936, Floris Regan Teacher. Back row: Loretta Bigley, Josephine Regan, Stella Glennon Lenahan, unknown, Mabel Fitzgerald, Edna Lamprecht. Third row: Eleanor Boyle, Norma Boyle, Stella Kohles, Mildred Bartels, Eileen Bigley, Mrs. George Kohles. Second row: Urban Kohles, Robert Semerad, Gene Bigley, unknown, unknown. Seated: Pat Boyle, Eileen McGee, Inez Semerad, Kathleen Regan, Wilma Lamprecht, Rita Kohles, Kathleen McGee, Anna Jean Kohles, Madonna Boyle, Bernice Boyle, Ione Semerad.



Country school in 1944. Back row: Anna Mae Kruger, Marlys Mohrfeld, Helen Kuhn, Billy Kuhn, Mary Ann Kuhn, Leon Murphy, Lester Mohrfeld. Front row: Betty Potter, Delores Kuhn, Lois Kruger, Marie Biwer, Elaine Biwer, Rosemary Mohrfeld, Dorothy Biwer (the baby), Joe Kuhn, Jerry Mohrfeld, Billy Joe Biwer.



were held in the daylight hours because of this, and if some programs were held at night, lamps were brought in.

The annual school Christmas program was attended by all members of the school district, young and old. Birthdays were celebrated and the spelling contests were a challenge to all. Spring brought a baseball game or two with a neighboring school. The final day of school meant a potluck picnic for the students and their families.

The school was furnished with reference books and hanging maps. A traveling librarian came to the school at regular intervals. This librarian, at one time, was a Miss Fessenden. Anyone who remembers the country school will also remember the Elson-Gray reader.

The schools were under the direction of the County Superintendent of Schools, but each school had its own Director, who was responsible for finding a suitable teacher and keeping the school in good repair. He and his family cleaned the school thoroughly each fall before the opening of school and the school yard received its once-a-year mowing. He submitted bills for teacher's salary, repairs, and miscellaneous supplies to a treasurer for payment.

Bathroom facilities were located at some distance from the schoolhouse—a two-hole privy—one for girls and one for boys, with a well-worn dirt path leading to each.

The Public School of Elma

The public schools of Elma have been a tradition since the town was founded. Since there was no schoolhouse available, the school was conducted in various locations in town. One of the old "school buildings" was located on the lot just south of where Gen Freidhof now lives. Many of these old buildings were destroyed by Elma's early fires.

The first school building, erected in 1892, after a building tax was voted, had four rooms for both grades and the high school. The first teachers were John Light, Anna Monaghan and Myrtle Bowman.

The following year, 1893, saw the first graduating class receive their diplomas. The first graduates were Clarence Steele, James Connelly, Gertrude Keefe, and Grace Fluke.

During the time that Elma was a Chicago Great Western division point there were, at one time, over 90 boys and girls in the first and second grades, and it was necessary to have half-day sessions. At that time there were about 100 pupils in high school.

This building was partly destroyed by fire and was used until January 6, 1930, when the equipment was moved over to the new school that would replace it.

The new building was two stories high, and built of brick. The four rooms in the north wing housed the eight grades.

The rooms on the first floor accommodated the home economics department including sewing and the cooking equipment. Adjoining the home economics room was the manual training room complete with benches, tools, and woodworking equipment. The science labor-

atory was also located on the first floor. The gymnasium, a spacious room that took up a corner, was used for all physical training and for basketball and indoor baseball. It was so constructed that it might be used as an auditorium also, and was equipped with a stage, furnished with drapes and a beautiful, maroon sliding curtain.

The upper floor housed the fifth, sixth, seventh and eighth grades in the north wing and an assembly hall for the high school students. The hall provided space for lockers. The superintendent's office was on the upper floor.

The boiler room, coal bunker and locker rooms for boys and girls, and a storeroom gave the school a total of 21 different rooms.

The faculty was composed of W. H. Tate, superintendent; D. Brandmill, high school principal; Laura Prather, home economics and math; H. H. Diekmann, English, band; Marie Casey, seventh and eighth grades; Catherine Laughlin, fifth and sixth grades; Mable Zimmerman, third and fourth grades; and Emma Pardee, first and second grades.

The high school teachers were all certified. Mr. Brandmill, principal, taught social science and physics; Miss Prather taught algebra, geometry and home economics. Mr. Diekmann taught three classes of high school English, one in biology, and was the band director. W. H. Tate, superintendent, taught Spanish, manual training, economics, typing, coached plays and athletics. There were fifty students in high school who took part in most of the extracurricular activities.

During an early year of the school's history, the

school produced two plays and a school carnival, and minstrel. There was an evening night school visited by families and friends of the pupils. A physical training and school exhibit were part of the spring program.

The athletic teams of the school had more than a fair measure of success, winning several tournaments.

Great strides were made over the years and the school boasted of a band, and at one time, group instruction on the piano. Yearbooks were published by the school for all years from 1934 to 1960. Journalists of the classes published school news every other week in the *Elma New Era* under the caption "Tom Thumb Times."

More recent superintendents were John Stuck, William Plopper, William Tate, John Lyford, James Lucken, P. E. Kehoe, H. H. Humiston, N. C. Groth, Dinsmore Brandmill.

The Elma Independent School District started a schoolbus route in 1950.

December 21, 1959, after many meetings and discussions, the Howard-Winneshiek Community School District was organized. The district included the former high school areas of Chester, Cresco, Elma, Lime Springs, and Ridgeway. It also included many one-room rural schools in both Howard and Winneshiek counties, and a few in Chickasaw County.

With the reorganization of the school, came the closing of the high school, with the last graduation exercises held in 1960. This class included James Schmidt, Melvin Haskovec, Albert Tlusty, Pat O'Neil, Larry Newhouse, Elroy Streich, Muriel Schroeder, Dick Quam, Grace Thompson, Leona Bodermann, James



Elma's first school was held in empty store buildings.

“Joe” Freidhoff, Elsie Cable, Norma Brown and Francis Freidhoff.

Many plans evolved in regard to the future structural organization of the district. Six elections were held for new facilities, with the final one being passed on December 7, 1965. This bond issue included money for remodeling the Elma Attendance Center, new facilities at the Lime Springs and Ridgeway attendance centers, and a new senior high school at Cresco.

The 1965-1966 school year found the seventh and eighth graders of Elma transferring to the junior high school in Cresco. The old senior high school building in Cresco became the junior high school for grades seven through nine, and a new building on the east edge of Cresco became the senior high school for grades ten through twelve. In 1985, the ninth grade was moved to the senior high school building.

The Elma Attendance Center provides for the education of grades kindergarten through sixth.

The Elma High School

The first commencement program of the Elma high school, in 1893, was held in the Potter Opera House and was as follows:

Music—Reception March

Essay—“Money”, Gertrude Keefe

Oration—“Peace and War”, Clarence Steele

Music—Vocal solo

Essay—“The World We Live In”, Grace Fluke

Valedictory—“The Golden Calf”, James Connolly

Address—Supt. John D. Porter

Presentation of Diplomas

Pres. of School Board, D. Fallgatter



The Elma school erected in 1892.



Elma Public School from another view. It was located on the current school site.



A group of students by the old school. The sign reads, June 2, 1899.



Elma Public School in 1900

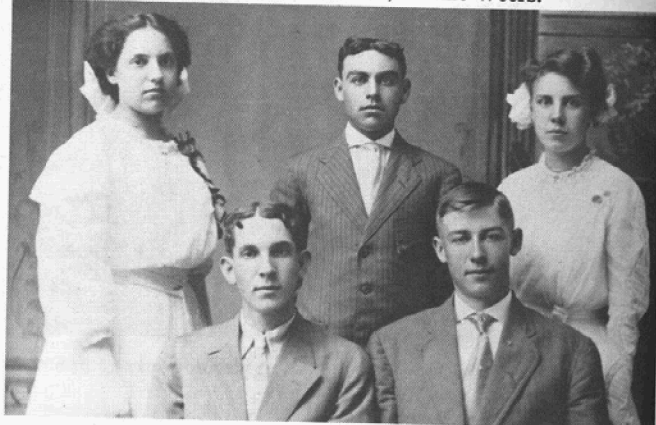


Elma High School in 1904; Principal—John Ayers, Blanche Moore, Mae Keefe, Carol Williams, Parke Brandmill, Lee Elwood, Jennie Biber, Margaret Trunkey, Charlie Keefe, Nellie Richardson, Lore-

ta Conway, Edna Zieseniss, Clara Weers, Elizabeth Haaf, Gene McCarthy, Dr. Vespers.



Elma High School 1907-1908. Back row: Fremont Young, Merle McGrane, Orville Gross, Clarence McGrane, unknown, Francis Alberts, unknown, and Mr. Beecher Beal, the Superintendent. Third row: Blanche Moore, Harriet Elwood, Miss Louise Williams, the teacher. Second row: Clara Weers, unknown, Mary Alberts, Doris Fallgatter, Florence Wiley, Helen English, Margaret Trunkey. Front row: Elmer O'Neill, Ruth Robison, unknown, Frances Elwood, Alice Church, Lillian O'Neill, Mamie Weers.

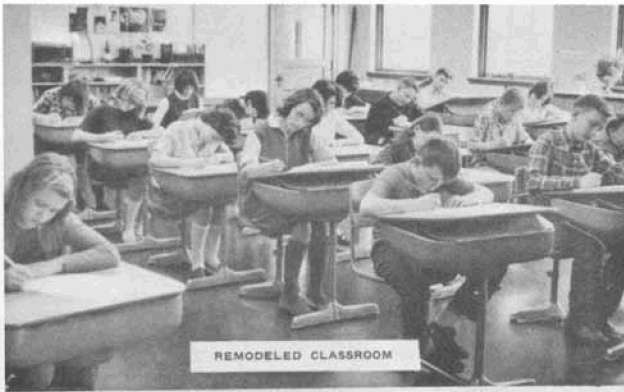


Elma Public School graduating class of 1909. Back row: Ruth Robison, Fremont Young, Mary Alberts. Seated: Merle McGrane and Orville Gross.



Sophomores and Freshman class of 1914. Back row: Alleena Weers, Marion Jacobs, Mavis Hyberger, Hazel Pierce, Juanita Dunham, Teacher Goldie Dowd Elwood, Merle Evans, and Joel Rohde. Front row: Clarence Sheets, Arthur Young, Edward McDaniel, Harrison Mahoney, Potter "Steve" Brandmill.

Elma Seniors and Juniors—1914-1915. Back row: Lylah Tidgewell, Beryl Brandmill, Esther Mantz, Verona Gross, Jennie Pantier, Teacher Goldie Dowd Elwood, Maurice Condon, Lena Richmond, Hazel Rohde, and Edna O'Neil. Front row: Clara Sheets, Harland Mead, Professor Steve Plopper, Neil Trunkey, and Rose Payne.



REMODELED CLASSROOM



REMODELED HALLWAY; NEW LIGHTS AND CEILING

NEW FUME HOOD EXHAUST FAN IN KITCHEN

After the bond issue of December, 1965, the Elma school was remodeled. Facilities of the Elma Attendance Center were shown in this folder at the time of the Open House.

Many of us, upon reminiscing about our school years, recall a teacher or teachers who were part of our school years. It would be impossible to name all the teachers, so we have placed a representative amount of pictures of teachers. More about some of these teachers can be found in the family section of this book. For the students of 1986, we can give you this added information as to how long these teachers have been a part of the educational program here in Elma.

Principal Irv Myron, taught grade 6 from 1971 to 1979, before becoming principal in 1979.

Kindergarten teacher, Regina Olson, has taught here 4 years.

First grade teacher, Mary McAvoy, has taught here 28 years.

Second grade teacher, Kendra Kleepsie, has taught here 17 years.

Third grade teacher, Judy Morgan, has taught here 6 years.

Fourth grade teacher, Lois Collins, has taught here 4 years.

Fifth grade teacher, Linda Schulz, has taught here 5 years.

Sixth grade teacher, Becky Stevicks, has been here just one year.

Learning Disabilities teacher, Dorette Fravel, has been here 4 years.

Reading Improvement teacher, Joyce E. Hart, has taught here 23 years—not all of them as reading teacher. She has taught in the classroom besides having taught reading classes.

Other special class teachers now are: band, Kathy Schultz; vocal music, Donna Sehmman; physical education, Larry Kain; art, Stephanie Diederich.



Teachers and principal in 1986. Starting from the top: Joyce E. Hart, reading improvement; Linda Schulz, 5th grade; Mary McAvoy, 1st grade; Mr. Irv. Myron, principal; Becky Stevicks, 6th grade; Judy Morgan, 3rd grade; Regina Olson, kindergarten; Lois Collins, 4th grade; Dorette Fravel, learning disabilities; Kendra Kleespie, 2nd grade.



Third and fourth grade in 1927. Back row: Marion Markham, Rose Womack, Lois Diekmann, Dorothy Evans, Rosanna Lauck, Allegra Power, Viola Krumm. Second row: Ralph Cook, Wendal Leitz, Leo Streich, Bernhard Weiland. Front row: Charles Garmen, Reed Elwood, unknown, Albert Billington.



Mrs. Fern Hammond, school secretary for 16 years.



1916 Class—Rowley Howard, William Krogh, Frances Pierce, Mabel Carroll, Stella Carroll, Bertha Rohr, Hattie Weber, Cleo Westendorf, Wyron Buchholz, Arlyn Weers, Viola Krogh, Clara Diekmann, Elsie Thies, Millicent Howard, Orian Adams, Edwin Streich, Arthur Ebert, Vera Sweet, Martha Parker.



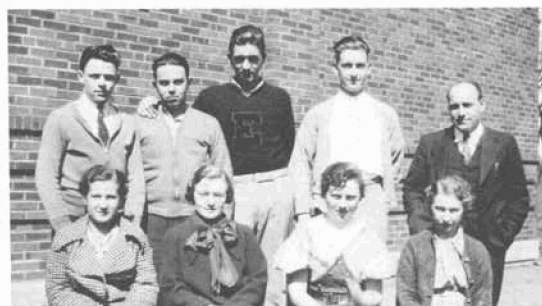
Junior-Senior 1926-1927. Back row: Elsie Gesell, Vera Sweet, Minnie Wegner, Greta Smith, Marion Schroeder, Helen Hubka, Frieda Ulfers, Lyanda Erion, Catherine Clear, Irene Saul, Laura Markham. Second row: Clarence Mantz, Otto Lammers, Edna Wegner, Millicent Howard, Hattie Weber, Clara Diekmann, Frances Pierce, Dorothy Miller, Herman Sweeney. Front row: Rowley Howard, Raymond Hill, Wilfred Diestler, Ralph Reinhart, Vincent Reinhart, Wyron Buchholz, Gustaf Alt, Lynn Fausnaugh, Raymond Gesell.



Elma High School in 1928. Top row: Salome Bonovsky, Stella Carroll, Coletta Sweeney, Viola Eiffler, Cora Eschweiler, Margaret Womack, Verona Frank, Marjorie Schroeder, Nona Bellis, Dinsmore Brandmill, William Tate, Mrs. Raymond Moore, Velma Womack, Leone Schroeder, Marjorie Helms, Wilma Sobolik, Margaret Krall, Berniece Berrie. Middle row: Lillian Schmidt, Ellen Englebart, Geneva Fausnaugh, Geraldine Crooks, Amelia Dine, Cleo Westendorf, Sarah Dine, Hester Mantz, Elsie Michaels, Rosella Buchholz, Evelyn Bartels, Ida Frahm, Albert Womack, August Alt, Floyd Manweiler. Bottom row: Orville Frank, Carlton Cummings, Norbert Groth, Charles Hyberger, Lyle Bellis, Irving Borg, Joe Borg, Fred Pierce, Kerwin Glatty, Robert Mead, Elmer Huenmiller, Harold McElvenny, Chelby Berrie, Ralph Miller, Edwin Streich, Howard Pollock.



Primary around 1929. Back row: Evelyn Cummings, Lois Reinhart, Gladys Warner, Dorothy Regan, Irene Weiland, Leah Borg, Lorna Mae Leitz, Ardell Powers. Second row: Walter Sweet, Paul Powers, Oscar Weiland, Harold Schroeder, Dale Cummings, Lyle Hart. Front row: Dick Robison, _____ Regan, Clarence Krumm, Leonard Streich, Bill Helms, Amos Shinn, Francis Drew.



Elma High School class of 1936. Back row: George Haberman, Charles Garmen, Bill Diekmann, Ralph Cook, Mr. John Lyford—Superintendent. Front row: Rosanna Womack, Lois Diekmann, Evelyn Jordan, Rosanna Lauck.



Elma High School—1931. First row to the right of picture: Harold Eiffler, Joe Whitstone. Claude Cummings, unknown, Leona Groth, Hadwig Hintz, Florence Pollock, unknown, Floyd Tate. Second row: Lloyd Eiffler, Valden Frank, Erma Gesell, Wilbur Weers, Ed Schroeder, unknown, Edna Gronwoldt, Norma Gronwoldt. Third row: empty seat, Willis Weers, George Watson, Frank Elwood, Roger Cook, Gwen Evans, Josephine Johnson. Fourth row: Janet Collins, empty seat, Francis Powers, unknown, Rosella Ball, Grover Markham, unknown, Gerald Fitzgerald. Fifth row: Alvin Frank, Lester Gesell, John Schroeder, Charles Parsons, Tom Watson, Floyd Tate, unknown, Freida Bentrup. Sixth row: Joe Sir, Charles Hyberger, Ralph Miller, Orville Frank, Marjorie Schroeder, Margaret Krall, Velma Womack, Lyle Bellis. Teachers standing in the back: Dinsmore Brandmill, Herman Diekmann, William Tate and Miss Prather.



Faculty and students in seventh and eighth grade in 1936. Back row: Mr. Herman Diekmann, Miss Elsie Miller, Mrs. Ruth Brandmill, Mr. Dinsmore Brandmill, teachers. Third row: Lyle Hart, Alfred Leitz, Edward Thomsen, Theodore Jensen, Dale Cummings, Bill Helms, Francis Drew. Second row: Leone Scheffer, Rita O'Neil, Lois Carter, Lois Reinhart, Aleta Gesell, Evelyn Cummings, Ardell Powers. Front row: Billy Helms, Harold Cummings, Clarence Krumm, Alene Morris, Edward Diekmann.



Seventh and eighth grades in 1945. Back row: Lylah Cook, Laverne "Bummy" Hinz, Langdon Longstreth, Donald Rimrodt, Donald Flugge, Duane Harms, Diane and Vionne Longstreth, Beverly Kirchner. Middle row: Mildred Schmelzer, Mary Kirchner, Verna Maseman, Barbara Bentrup, Vera Maseman. Front row: Robert Schroeder, Robert Bentrup, Richard Weers, Louis Meyerhoff, Victor Schroeder.



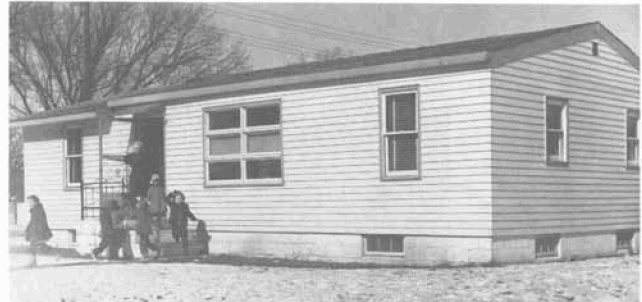
Elma High School class of 1945. Back row: Harold Evans, Mr. Reed J. Elwood—teacher, Erwin Brummond, Dean Harris. Front row: Ernestine Richmond, Donna Reckner, Phyllis Markham, Viola Cummings, Alyce Evans. Erma Eschweiler was not present when the picture was taken.



Elma Public School Kindergarten—1957-58. Patty Stevenson, Carolyn Simons, Nancy Riley, Mark Rima, Billy Cashman, Randy Hammond, Christine Rainy, Debbie Corrick, and teacher—Anna Mae Lammers. Those not pictured are: Cheryl Hayes, James Carroll, Susan Garmen, Kent Cook, David Zubrod, Mark Shannon, Alice Lee Enright, Gary Ries, Joanne Heying, Judy Fogarty, Rosemary Jenn, Heidi Leaman, Deborah Meyerhoff and Thomas Offerman.



Freshman class of 1944-45. Back row: Harold Humiston, Joyce Elaine Hopkins, Marie Boderman, Shirley Palmersheim, Isabel Lauck. Front row: Harlan Halweg, Earl Billington, Alan Stevens.



The "Kinder House" in 1958.

A school function in 1953.

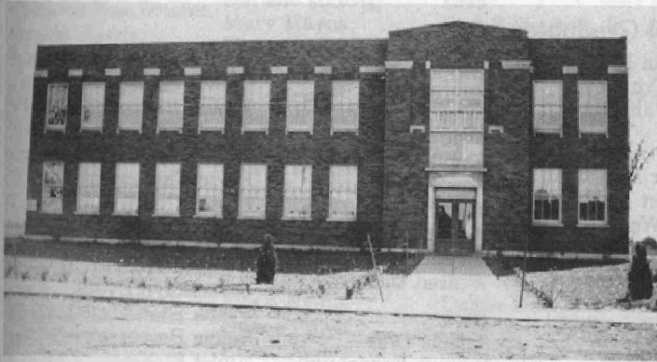




Freshman class of 1954.



Teachers in the early 1930s. Back row: Dinsmore Brandmill, Herman Diekmann, Ruth Bailard, Bill Tate, superintendent, and Clyde Cummings—janitor. Front row: Marie Casey, Emma Pardee, Mabel Mannetter, and Catherine Laughlin.



Elma public school built in 1929.



Staff of the Elma Public School in the middle 1930s. Back row: John Lyford—superintendent, Clyde Cummings—janitor, Herman Diekmann, Dinsmore Brandmill. Front row: Sadie Noonan, Catherine Laughlin, Elsie McGrath, Emma Pardee, Ruth Brandmill.



The Elma Attendance Center in 1985.



Public school faculty. Back row: Clyde Cummings—janitor, Herman Diekmann, Dinsmore Brandmill, John Lyford—superintendent. Front row: Margaret Stevenson, Miriam Artman, Sadie Noonan, Mary Wier, Ella Rinn.



Early teachers: Clara Weers, Goldie Dowd Elwood, Win Canade. Seated: Professor Steve Plopper and Gertie.



Class reunion—1979. Members of staff from 50 years earlier were: Denny and Ruth Brandmill, Sadie Noonan, and Clyde Cummings. Clyde was 90 years old.



Class reunion for the class of 1929 held in Elma in 1979. Back row: August Alt, Howard Pollock, Joe Borg, Verona Frank, Kerwin Glatly, Elsie Michaels Thies. Front row: Marjorie Helms Czajowski, Geraldine Crooks Hoven, Margaret Womack Schroeder, Rosella Buchholz Weers.

Elma High School Graduates

1893 Clarence Steele Grace Fluke Gertrude Keefe James Connolly	1903 Florence Church Hattie Watson Fannie Devereaux	1915 Verona Gross Lylah Tidgewell	Herman Diekmann Beth Trunkey Ena Mahoney	Edna Wegner Gustave Alt Lynn Fausnaugh Elsie Gesell Navelle Manweiler Rowley Howard Vera Sweet Marcella Sullivan Bernadine Sullivan Wilfred Diestler	Tom Watson Grover Markham Freida Bentrup Joseph Sir John Schroeder Floyd Tate Lester Gesell
1894 John Trunkey Homer Fallgatter Grace Pooler Emma Fallgatter Tena Brinkman Kittie McCarthy	1904 Laura Miller Mae Mahoney Celia Huber Elsie McGrane	1916 Jennie Pantier Beryl Brandmill Lena Richmond Edna O'Neill Maureece Condon Harland Mead Esther Mantz Hazel Rohde Sara Sheets	1923 Walter Diekmann Herbert Mealy Julia Weber Merlin Snowden Thomas Miller	1928 Amelia Dine Geneva Fausnaugh Colletta Sweeney Ellen Englebart Edwin Streich Fred Pierce Albert Womack Stella Carroll Lillian Schmidt Cleo Westendorf	1933 Roberta Mabry Gwendolyn Evans Frank Elwood Selma Berentsen Violet Fisher Erna Bartels Willis Weers Roger Cook George Watson Rosella Ball Gerald Fitzgerald Josephine Johnson
1895 No class	1905 No data available	1917 Elmer Hyberger Potter Brandmill Joel Rohde	1924 Harold Gesell Elmer Tyler Cleone Adams Hazel Bellis Beryle Cook Addie Miller Loren Diestler Teresa Reinhart John Lund	1929 Verona Frank Sara Dine Elsie Michaels Margaret Womack Joe Borg Geraldine Crooks Hugo Bentrup Hester Mantz Marjory Helms Rosella Buchholz Kerwin Glatly August Alt	1934 Harold Eiffler Wilbur Weers Edwin Schroeder Valden Frank Erma Gesell Marcella Bloom Mary Catherine Laughlin Florence Pollock
1896 Mabel Potter Elizabeth Mahoney Mary Trunkey	1906 Loretta Conway Nellie Richardson Lee W. Elwood Park Brandmill Edna Ziesenis Jennie Biwer	1918 Clarence Sheets Theodore Tillman Ed McDaniel Ed Diekmann Mavis Hyberger Hazel Pierce	1925 Evelyn Erion Marie Ulfers Ruth Mealy Dolly Hyberger LeRoy Miller Arthur Weers Victor Streich Raphael O'Donnell Will Sweet Howard Pickering	1930 Leone Schroeder Robert Mealy Carlton Cummings Waldon Piehn Irving Borg Howard Pollock	1935 Donald Cummings Ava Beth Mealy Merrill Markham Georgene Evans Florence Johlas Jean Mahoney Merle Schroeder
1897 Gertrude Biwer Clella MacDonnell Kittie Fallgatter Eddie Burke Anna English Elizabeth Cusack Stella Mabry	1907 Blanche Moore Alice Trunkey	1919 Inez Mead Esther Pierce Anna Dudack Robley Evans	1926 Clara Diekmann Dorothy Miller Greta Smith Helen Lund Irene Saul Raymond Gesell Wyron Buchholz Otto Lammers Clarence Mantz Marion Schroeder Herman Sweeney Freda Ulfers Raymond Hill Catherine Clear Millicent Howard	1931 Lyle Bellis Margaret Krall Ralph Miller Orville Frank Charles Hyberger Velma Womack Marjorie Schroeder	1936 George Haberman Charles Garmen Ralph Cook Bill Diekmann Rose Womack Lois Diekmann Rosanna Lauck Evelyn Jordan
1898 Frank Mahoney William McGrane Alfred Ferrie	1908 Hattie Elwood Margaret Trunkey Elizabeth Haaf Clara Weers	1920 Lloyd Evans Myra Parker Aletha Mahoney Vivian Mealy	1927 Martha Parker Laura Markham Frances Pierce Lyanda Erion Arlyn Weers Hattie Weber Minnie Wegner	1932 Alvin Frank Charles Parsons Derr Arnold Gesell Charles Flugge	1937 Albert Billington Evelyn Eiffler Lee Elwood Frances Haskovec Victor Johlas Viola Krumm Marian Markham Ellen Thomsen Reed Elwood
1899 Erma Nemire Mattie Rowley Abe Keefe Katie Watson	1909 Fremont Young Merle McGrane Mary Alberts Orville Gross Ruth Robison	1921 Esther Young Elsie Michaelson Amanda Boderman Donna Pantier Carmalite Sixbury Dinsmore Brandmill Edwin Spaulding Marie Schwake Thelma Tidgewell Louise Michaelson			
1900 Mary Fallgatter Laura Devereaux	1910 Clarence McGrane Doris Fallgatter	1922 Ruth Pierce Lillian Bellis Mae Cook Ida Hyberger Eugene Parker Anthony Tillman Anthony Biwer			
1901 Archie Pooler Harland Kelty Edward D. Conway Katie Lenehan Leone Sisco Mary Sayers Lena Biwer	1911 Francis Albert Albert Derr Frances Elwood Louise Reckner Mamie Weers Lillian O'Neill Alice Church Helen English				
1902 Bessie Coulter Ruth Quinby Margaret Biwer Margaret Pittenger	1912 No data available				
	1913 Marjory Trunkey John Heinmiller				
	1914 Carol Richmond				

1938	William Michael	1946	Verna Maseman	Rita Haskovec	1959
Otto Brummond	Arthur Valvoda	Elizabeth Robison	Louis Meyerhoff	Elston Ashpol	Kenneth Schmidt
Marjorie Carter		Alice Lauck	Ivan Myers	Fred Schwake	Lorilee DeVries
Arlene Dusheck	1942	Lynn Stevenson	Mildred Schmelzer	Arnold Tonjes	Mary Ann Ludwig
Donald Fausnaugh	Adeline Brockney	Donna Palmersheim	Richard Weers	Mary Prochaska	Donna Meyer
Arlyn Gesell	William Finch	Lois Brummond	Vera Maseman	Marcella Ludwig	Jean Cook
Dale Hart	Florence Hanna			Rita Shock	Karen Reinhart
Duane Hayes	Geraldine Kach	1947	1951		Peter Hubka
Esther Michael	Berneta Krumm	Jean O'Neil	Shirley Harms	1956	Marinell Hayes
Donald Morris	Jack McAvoy	Joyce Sunde	Elinor Teepe	Betty Hinz	Myron Schmidt
John Schwake	Richard Robison	Gerald Maravetz		James Fisher	Sandra Gesell
Reuben Friedrich	Laven Spaulding	Clifford Walker	1952	Verla Maseman	George Tlusty
Gladys Lauck	Martha Womack	Wilma Lamprecht	Norbert Brummond	Adolph Ludwig	Kenneth Miller
		Marion Stueber	Julian Kostka	Beverly Lentz	Robert Roethler
1939	1943	Clemens Schroeder	Lois Sullivan	Raymond Havlik	
Leah Borg	Gaylord Carter	Joyce Teepe	Jack Kozlen	Mildred Prochaska	1960
Celesta Buckley	Dean Deegan		Richard Rosauer	James Mitchell	Leona Boderman
Clarence Bueckmann	Darlene Halweg	1948	Leonard Shatek	Sharon Teepe	Norma Brown
Harold Harris	Mary Hayes	Earl Billington, Jr.		Jack Whiting	Elsie Cable
Robert Hayes	Maxine Johnson	Marie Boderman	1953	Carol Dybevinger	Jerry Cummings
Jane Watson	Velma Johnson	Harlan Halweg	Bruce Carter	Eugene Schwake	Francis Friedhoff
Vitalias Jarosh	Carl Mealy	Joyce Elaine Hopkins	Jane Rosauer	Dean Schroeder	James "Joe" Friedhoff
Raymond Rimrodt	Vernon O'Neil	Isabel Lauck	Daniel Halweg	Robert DeVries	Melvin Haskovec
Evelyn Schroeder	Raymond Reinhart		DeLoris Kirchner		Beverly Hinz
Harold Schroeder	John Thomsen	1949	Joe Prochaska	1957	Larry Newhouse
Violette Valvoda	Reed Cook	Isabel Bueckmann	Bonita Cook	Lois Billington	Pat O'Neil
Alberta Walker	Martha Jensen	John Bodermann	Bernice Haskovec	Jack Brandmill	John Prochaska
Gladys Warner		James Darrah	Harry Nolda	Irene Cable	Dick Quam
		Dale Friedrich	Charlotte Tonn	Donna Cummings	James Schmidt
1940	1944	Lawrence Halweg		Darlys DeVries	Muriel Schroeder
Mildred Bartels	Kathryn Carter	Duane Harms	1954	Marion Hyke	Elroy Streich
Lois Carter	Floyd Evans	Beverly Kirchner	Charlotte Buchholz	Barbara Kozlen	Grace Thompson
Evelyn Cummings	Duane Fuller	Maxine Laue	Roger Quam	Anne Laue	Albert Tlusty
Orville Friedrich	Eileen Mantz	Dianne Longstreth	Ruth Kozlen	James Marik	Larry Voves
Aletha Gesell	Eloise Anderson	Vionne Longstreth	Monica Smith	Leslie Miller	Delores Zobeck
William Helms	Lorraine Halweg	Eugene Myers	Marvin Kirchner	Duane Rimrodt	
Ted Jensen	Robert Kozlen	Jeanette Myers	Kenneth Stueber	Wanda Schroeder	
Rita O'Neil	Ruby O'Neil	Dorothy Murray	Dale Lamprecht	Ruby Simons	
Lois Reinhart	James Robison	June Nolda	Donald Dybevik	Rose Mary Theilen	
Russell Schroeder	Keith Roethler	Betty Roethler	John Shatek	Sherly Volbrecht	
Edward Thomsen	Raymond Valvoda	Robert Roethler	June Brandmill	Edward Tonjes	
		Wanda Roethler	Delbert Englehardt	Henry Smith	
1941	1945	The Rev. Robert		1958	
Glen Cashman	Erwin Brummond	Schroeder	1955	Gene Deterding	
Harold Cummings	Viola Cummings		Robert Whiting	Alvina Flugge	
Edward Diekmann	Erma Eschweiler	1950	Alice Laue	James Johnson	
Velma Fuller	Alyce Mae Evans	Jeanette Berka	Rosanna Brummond	Janet Lentz	
George Gardner	Harold Evans	Irma Boderman	DuWayne Kirchner	Alvin Meyer	
Lyle Hart	Dean Harris	Marilyn Darrah	Dale Boderman	Janice Teepe	
LaVern Jarosh	Phyllis Markham	Jo Ann Dybevik	Lois Fountain	Muriel Johnson	
Lorna Mae Leitz	Donna Reckner	Mary Kirchner	Margaret Smith		
	Ernestine Richmond	Langdon Longstreth	John Lund		
			Marie Berry		

We apologize if any name is in error or has been inadvertently omitted from the list.

Immaculate Conception School

Father Gunn, feeling the need of Christian education for the children of the parish, erected a parochial school upon the parish property a short distance from the church in 1906. The new school was dedicated that same year. The school was conducted by the Sisters of Mercy of Cedar Rapids.

The first group of Sisters to be assigned to the Immaculate Conception School at Elma left Cedar Rapids on August 16, 1906 on an early Rock Island train reaching Oelwein about noon, where they were forced to wait several hours for the Great Western train that would carry them on their way to the end of their journey. They spent the time between trains at Sacred Heart school and enjoyed the hospitality of the Sisters

there. As train time drew near Father P.S. O'Connor, the pastor of Sacred Heart, accompanied them to the station and insisted on treating them to an almost unheard of luxury for nuns, at that time, a ride in the pullman.

At six o'clock they reached Elma and found a large group of people including their new pastor, Father Francis Gunn, gathered on the station platform to welcome them. As the train pulled in, some of the receptionists grouped themselves about the day coach and watched eagerly for the Sisters to come forth. What must have been their surprise when they saw the future teachers of their school coming from the rear of the train, having ridden pullman all the way from Oel-

wein to Elma, a distance of perhaps fifty miles!

Father Gunn welcomed them most cordially and then helped them into a high, three-seated conveyance, the sort of vehicle which, in 1906 was used to transport pallbearers from church to cemetery. In this, the Sisters found themselves being hurried along the Main Street by a briskly moving team, and very shortly arrived at the Pastor's residence. Here they met Miss Nellie Hagarty, Father Gunn's housekeeper, and a large number of the ladies of the parish who had come together bringing their choicest spring fries, their crispy brown rolls, their home-grown vegetables rendered palatable by home-made butter, their large assortment of delicious preserves and their angel food, unsurpassed outside their own circle.

Sister Mary Josephine Donelon was chosen to be in charge of the School and act as sole instructor of the High School department. Sister Mary Clare Connolly would teach grades 7 and 8; Sister Mary Bonaventure Burke, 4th, 5th, and 6th; Sister Mary Delores Egan 1st, 2nd, and 3rd; Sister Mary Raymond Curran, music; and Sister Mary Paul Fahey would impart to all with whom she came in contact, lessons in humility, self-sacrifice, and devoted service to others as she went about her work in the kitchen. Sister Mary Mechtilde O'Malley was added to the teaching faculty in March, 1907; she finished out the school year but did not return the following September. Instead, her failing health compelled her to remain at Mercy Hospital, Cedar Rapids, where she died September 4, 1907.

The new building was far from being ready for school, or even for occupancy when the Sisters arrived. Carpenters, plumbers, and painters were still working on the structure, making it necessary for the Sisters to live at the pastor's residence until the building was completed. Father Gunn turned over the parsonage to the Sisters, while he occupied a room in the Tim Deegan home.

When completed, the school not only provided the necessary classrooms, it also contained the living quarters for the Sisters who served the parish. The kitchen and dining area was located in the lower level, the living room was on the first floor and bedrooms occupied the top floor. A small, beautiful chapel on the first floor provided a quiet sanctuary for private devotion for both Sisters and students. The Holy Sacrifice of the Mass was offered there daily.

The opening of the Immaculate Conception School was an epoch-making day in Elma. Children rode as many as six miles by horse and buggy to attend the parochial school. On the first day, when the students filed out of the building, people living in the neighborhood stood on their front porches and watched with pride the long lines move from the building out into the street.

The members of the first graduation class in 1907 were: Julia Mae Keefe (Casey); Rachel Cashman (Lynch); Myrtle Kane (Galligan); and Leo James Ryan.

The years rolled by, enrollment of the school increased and on May 17, 1920, Father Gunn received notice that the school was fully accredited by the Iowa

Committee on Secondary Schools. This was a recognition Father had wanted for his school, and being in failing health, the announcement brought much happiness to him. He died scarcely five weeks later, on June 22, 1920.

Increased enrollment necessitated the discontinuance of the kindergarten class in 1945 and the opening of two additional classrooms in 1954. Mrs. John Freidhof began teaching in 1955, the first lay teacher since Mame Martin who taught in the pioneer days of the school. (At the time of the school's closing in 1969, there was one lay teacher on the faculty, Mrs. Robert Stapleton, who taught in the seventh and eighth grade.)

In 1964, the Immaculate Conception Parish began the construction of a new one-story convent, plus the remodeling of the school. The Sister's Home was completed for dedication on May 9, 1965, and the parish was invited to "Open House" in the freshly re-decorated school September 5, 1965.

Before its discontinuance in 1968, the I.C. High School offered a central library; each grade classroom was provided with reference and library books, audio-visual equipment for all classes and record players for all rooms. High school students who were interested in teaching had the opportunity for cadet-teaching. In addition to the academic training, there was opportunity for extra-curricular activity in the fields of music, drama, journalism, and athletics.

School dramas, commencement exercises, and such school activities were held in early years in the Weers Opera House and later, in the I.C. Parish Hall on West Main St. In 1951, a gymnasium-auditorium was built near the school to accommodate school functions. It also had kitchen and dining facilities for school lunch programs and other parish activities.

Students of Journalism had the opportunity to see their work published in the school news, Voice of the Academy, in the Elma New Era. In the early 1960's the school had their own paper the I.C. ELMA JOURNAL.

In the fall of 1967, the school of Our Lady of Lourdes Parish, Lourdes, closed and their students were bussed to Immaculate Conception in Elma.

In the fall of 1968, the high school closed because of the lack of funds and shortage of Sisters. The grade school remained open until the spring of 1969.

The last graduating class of the I.C. School, which was the 61st graduating class, held their commencement exercises in May of 1968. The class members were:

Betty Havlik
Beverly Ptacek
Margaret Friedhoff
Daniel Kobliska
Michael Heying
Allan Meier
Dean Schroeder
Neil Rubly
Connie Sullivan
Patricia Enright

Vincent Fangman
Michael Sullivan
Dale Knecht
Lawrence Reiss
Mary Fogarty
Patricia Kinney
Bernard Eichenberger
John Helfter
Creighton Roethler

Official word of the closing of the Elma Parochial School Attendance Center and convent came in the late winter of 1969, when Archbishop James J. Byrne of Dubuque announced their closing at the end of that school year.

Since the Sisters would no longer be living in Elma, the furnishings of the convent were sold at auction in 1969, and the school facilities were sold in the fall of 1970.

Destruction of the school began in November of 1970, marking the end of an educational mission that had begun more than a half century before, and closing an era in parish history.



Immaculate Conception Academy. The door to the left was the main door which led into the Sisters living quarters.



I.C. School circa 1910



I.C.A. School sixth grade class in 1912.



Senior boys in 1914



High school boys of 1914



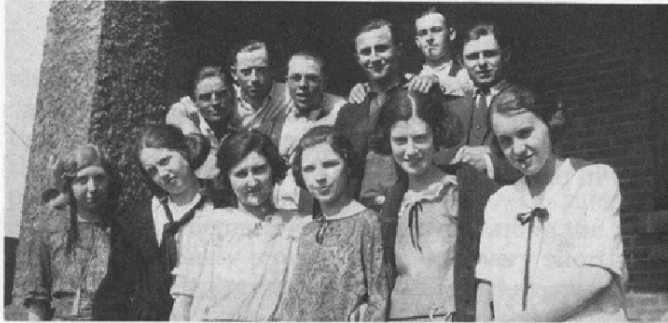
I.C. 6th and 7th grade in 1914



I.C. Academy 1914 3rd and 4th grades. Back row: Dan Halpin, John Soukup, Ambrose Scully. Middle row: Paul Devereaux, Gerald Beaumaster, Steve Elgas, Eddie Murphy, Don Madden, Don Murray, unidentified, Clarence Kurtenback, Matt Garmen, Bernard Kelly, unidentified, Ed McGrane, Urban Conway, Matt Kinney, George Kane, Kenneth Fair, Walt Gansen. Front row: John Stritzel, Paul Kildee, Merwin Kennedy, unidentified, Matt Gansen, Dick Siddal, Leonard Gleason, Irven Wentz, Bill Biwer, Bill Gansen.



Class of 1920—Norb O'Donnell, Albin Kennedy, Ruth Kurtenback, Cliff Kelly, unidentified, John Beaumaster, Mary Kelly.



Graduates of 1923 at the old Opera House after play practice. Back row: Harold Kennedy, Amby Noonan, Karl Meirick, Irven Wentz, Jim Clark, Bernard Kelly. Front row: Geneva Jacoby, Alice Connell, Marcella McGrane, Clementine Brophy, Annette O'Donnell, Katherine Brennan.

I.C. High School circa 1923



Grade school of I.C. Academy circa 1925. Back row: Agnes Budke, Mary Whalen, Lorraine Kinney, Marie Brennan, Marian Whalen, Alice Garrett, Maybeth O'Toole, Muriel Whalen, Dorothy Lammers, Anna O'Donnell, Sophia Natham, Nora Kelly, Marian Cashman. Middle row: Clarence Meirick, Clarence Diesburg, John Gardner, Truman Dvorak, Glen Clark, Paul Kelly, Helen O'Donnell, Mildred Carroll, Ed Hilsman, Francis Schmelzer, Peter Palmersheim, Bob Conway. Front row: Ed Beecher, LaVern Sullivan, Tom Kennedy, Don Keefe, Harrison Silver, Francis Delurey, Keith Kelly, Paul Fogarty, Clement McGrane, Vivian Riley, Lawrence Rosonke.



I.C. High School of 1926—Back row: Hazel Hastings, Cora Eschweiler, unidentified, Violet Birmingham, Bernice Riley, Marcella Gansen, Isabelle Brennan, Mildred Birmingham, Alice Clynych, Helen Frank, Lila Sullivan, Ellen Garmen, Gertrude Palmersheim, Leila Keefe, Rosella Frank, Myrtle Burke, Norb Conway, Art O'Donnell, John Connolly. Middle row: Al O'Donnell, Emma Novy, Alice Rice, Gladys Regan, Alice Biber, Theresa Rosonke, Marie O'Brien, Merle Hastings, Marcella Kennedy, Vivian Clark, Minnie Hilsman, Louis Cashman, Ray Hilsman, Willis Riley, Clarence Cashman, Charles O'Donnell, Linus Gardner. Front row: Ed Rubly, Don Dunton, Harold Rubly, Matt Palmersheim, Frank Gardner, Harold Showalter, Jim Gilligan, Virgil Sullivan, John McGourty, John Whalen, Earl McGrane, Wallace Riley, Linus Showalter, John Murray, Ted Biber, Wallace Stute, Tom Whelan, Art Hilsman, Art Mulick. Lying in front: Cornelius Kurtenbach, Walter Riley, Gene Fogarty.



Class of 1929—Back row: Louis Cashman, Marcella Gansen, John Whalen, Theresa Rosonke, Walter Riley, Alice Biber, Eugene Fogarty. Front row: John Murray, Gladys Regan, Linus Showalter, Emma Novy, Clarence Mulick, Alice Rice.



Class of 1930—Back row: Esther Armstrong, Lawrence Klobassa, Mary O'Donnell, Earl Palmersheim, Evelyn Kinney, Gerald Fogarty, Catherine Keefe. Middle row: Clara O'Donnell, Dorothy McGrane, Joe Dusheck, Rosemary Sullivan, Anna Palmersheim. Front row: Joe Sullivan, Elroy Kelly, Bill McConnell, Ralph Hilsman.

Juniors and Seniors of I.C.A., 1935—Back row: Elizabeth Kobliska, Clara Thompson, Lucille Kobliska, Delores Connelly, Agnes Budke, Helen O'Donnell, Marcella Gardner, Geraldine Sullivan, Marcella Swehla, Ilene Riley. Middle row: Donald Keefe, Ray Hanrahan, Paul Fogarty, Bob Conway, Muriel McAvoy, Eileen Showalter. Front row: Tom Sullivan, James Conway, Norbert Biber, Keith Kelly, Elmer Mormen, Russell Murphy, Adrian McGrane, Edward Beecher, Harrison Silver.



I.C. Academy class of 50 years ago, 1936—Back row: James Conway, Donald Lentz, Richard Zak, Harrison Silver. Middle row: Elizabeth Kobliska, Muriel McAvoy, Ilene Riley, Marcella Gardner, Marcella Swehla, Agnes Budke. Front row: Adrian McGrane, Don Keefe, Vince Freidhof, Lucille Kobliska, Margaret Biever.

Class of 1945 of I.C. Academy—Back row: Myrna McGrane, Marian Chihak, Geraldine Biber, Mary Jane Beecher, Francis Riley, Mary Galligan, Rose Marie Sullivan, Georgine Klobassa, Maxine Klobassa, Darlene Marr. Front row: Robert Rink, George Lammers, Jack Burns, Joseph Heineman, Leo Pospichal, Dale Showalter, Leroy Mohrfeld, Joe Chihak.





Class of 1958—Back row: Jim Chihak, Roger Zeimetz, Bob Corrick, Robert Palmersheim, Michael Ungs. Middle row: Jim Gardner, Jim Birmingham, Pat Conway, Carol Riley, John McGrane, Jim Burke. Front row: Myrna Kay Sullivan, Judy Stapleton, Louise Meirick, Tory Heineman, Madonna Womack.



A teacher at I.C. Academy, Sister Mary Lorenz.



Class of 1960 on their Senior Skip Day—Roger Biwer, Joe Birmingham, Eugene Meier, John Ries, Gary Hyberger, Kenneth Fangman, Kenneth Palmersheim, Bonnie Lentz, Jean Chihak, Dianne Palmerseim, Darlene Dushek, Dorothy Biwer, Theresa Biwer, Betty Chambers, Diane Kinnamon, Marilyn Zeimetz, Beverly Ungs, Gayle Halpin, Karen Klobassa, Anna Chambers. Theresa Biwer and Anna Chambers were chaperones for the class day.



Teachers Sister Mary Ruth and Sister Mary Madonna in the I.C. gym—1961.



Class of 1961—Back row: Father Cassidy, Elsie Chihak, Joanne Freidhof, Donna Chihak, Sandra Schnurr, Kay Dunn, Catherine McGrane, Jean Burke, Ann O'Donnell, Wilma Fogarty, Myrna Conway, Margorie Fangman, Lou Ann Zeimetz, Elaine Ries, Father Purtell. Front row: John Boyle, Lindy Beecher, Kenny Hartogh, Al Biwer, David Lammers, Jim Stapleton, Dave Zobeck, Gary Burke, Dick Fausnaugh. Charles Riley in front.



Catholic church, rectory, and academy of Elma.

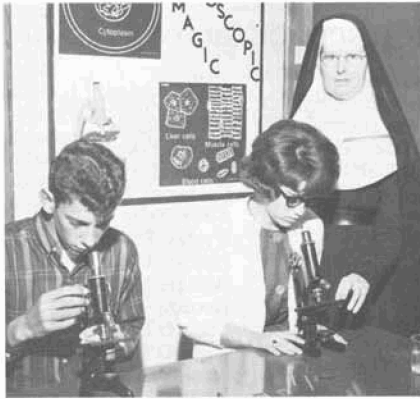


Biology class with Sister Mary Madonna and students Lorraine Pullman and David Fangman.

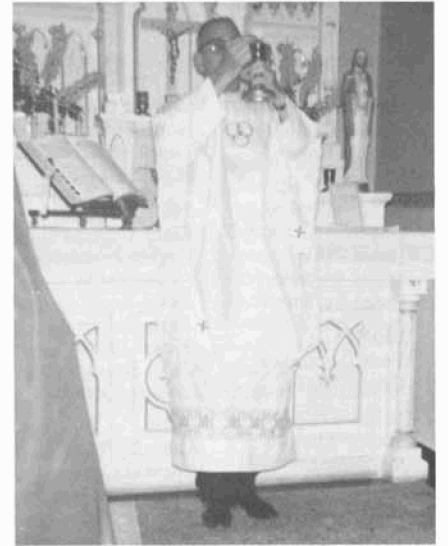


I.C. Gymnasium and Dining Hall, completed around 1952.

Sister Madonna and students Larry Gardner and Betty Jo Beecher.



The Sisters who taught in the parish were given the opportunity to celebrate Mass in the chapel in the school. Father Weber is shown celebrating Mass in this picture.



The flagpole in front of the I.C. School was climbed by Kenny Hartogh—Class of 1961.



Immaculate Conception Academy in 1947



A streamlined new chapel was included in the Convent building built in 1965.



I.C. Academy Class of 1962. Back row: Mary Lou Kinney, Loren Bayer, LaVern McGrane, Dorothy Birmingham, Tom Gansen, Jerry Fitzgerald, Vicki Mullinex. Middle row: Raymond Kelly, Connie Conway, Bob Lohuis, Charlene Sullivan, Mike Meirick, Katherine Recker. Front row: Joyce O'Donnell, Dan Reagan, Alice Brophy, Pete Palmersheim, Joyce Fair, Paul Semerad.

IMMACULATE CONCEPTION HIGH SCHOOL GRADUATES

1907	Wilfred Clair	1923	Arthur Mulick	1930	Lucille Kelly
Rachel Cashman	Nora Regan	Alice Connelly	Mildred Birmingham	Esther Armstrong	Dolores McGrane
Myrtle Kane	Lauretta Noonan	Annette O'Donnell	Isabelle Brennan	Joe Dusheck	Mary Mulick
Mae Keefe	Hattie Havorka	Clementine Brophy	Gertrude Palmersheim	Gerald Fogarty	Edna O'Donnell
Leo Ryan		Catherine Brennan	Violet Birmingham	Ralph Hilsman	John Rice
1908	1918	Marcella McGrane	Cornelius Kurtenback	Catherine Keefe	Gail Silver
Lloyd Biwer	Mary O'Donnell	Geneva Jacoby	Linus Gardner	Elroy Kelly	Marie Sullivan
Maria Sullivan	Esther Noonan	Bernard Kelly		Evelyn Kinney	
Omar Sullivan	Irene Noonan	Ambrose Noonan	1927	Lawrence Klobassa	1934
	Ethel Kennedy	Harold Kennedy	Hazel Hastings	William McConnell	Nora Kelly
1909	Jane Halpin	Carl Meirick	Merle Hastings	Dorothy McGrane	Ed Lentz
Tom Devereaux	Floyd Jacoby	Irven Wentz	Rosella Frank	Clara O'Donnell	Marian Cashman
Cassie Keefe	John Beaumaster	James Clark	Myrtle Burke	Mary O'Donnell	Evelyn Pospichal
	Joseph Cashman		Norbert Conway	Anna Palmersheim	Melvin O'Donnell
1910	1919	1924	Thomas Whalen	Earl Palmersheim	Peter Palmersheim
Maude Deegan	Clem Kelly	Merwin Kennedy	Mike Fogarty	Joe Sullivan	Leo McAvoy
Pearl Kelly	Donald Conway	Rose Zeta Showalter	Clarence Cashman	Rosemary Sullivan	Mariam Whelan
Harry Norton	Margaret Garmen	Margaret Gilligan	Harold Rubly		Alice Garrett
Alice Pospichal	Mayme Kelly	Mabel Scully	Wallace Stute	1931	Maybeth O'Toole
	Elizabeth Gilligan	Cleola M. O'Dowd	Charles O'Donnell	Margaret (Elsie) Berry	LaVern Sullivan
1911	Mary E. Silver	Gertrude Lively	Arthur O'Donnell	Mary Ellen Birmingham	Lorraine Kinney
Coletta Conway	Gladys Kelly	Georgia Keefe	John Connelly	Pauline Cashman	Margaret Kurtenback
Leo Conway	Leone McGrane	Walter Gansen	Theodore Biwer	Mabel Carroll	Muriel Whelan
Phil Dahley		Albert Showalter	Matt Palmersheim	Helen Hilsman	Paul Kelly
Luella Devereaux	1920	Carl Treanhert		Jerome Murphy	John Gardner
George Hoppe	Ruth Kurtenback	George Kane	1928	Willard Conway	Sophia Natham
Sadie Noonan	Norbert O'Donnell	Anthony Chihak	Dorothy Birmingham	Donald McGrane	John Freidhof
	Cliff Kelly	Henry Smith	Ralph Biwer	Gladys Clynch	Anne O'Donnell
1914	John Beaumaster	1925	Kathryn Casey	1932	1935
Mary Kildee	Mary Kelly	Mildred Mulick	Gertrude Clynch	Elizabeth Budke	Geraldine Sullivan
Lillian Gleason	Albin Kennedy	Angela Fogarty	John Chihak	Ilene Clark	Robert Conway
Paul Stevens		Helen Hanan	Frank Gardner	Francis Fogarty	Helen O'Donnell
1915	1921	Anastacia Conley	James Gilligan	Frank Hruska	Clara Thompson
William Cannon	John Fair	Gertrude Keefe	Elizabeth McAuliffe	Vera Keefe	Eileen Showalter
Paul Conway	Art Gansen	Anna Keniry	Earl McGrane	Eileen Kelly	Mary Biever
Rose Conners	Maud Halpin	Glendon Neeb	Marie O'Brien	Myrna Kelly	Dolores Connelly
James Clancy	Harold Kelly	Ralph Hastings	Alphonse O'Donnell	Agnes Maruska	Irene Chihak
Mary Delurey	Raphael Monaghan	Tim Kelly	Irving P. O'Dowd	Glenevieve McGrath	Clarice Birmingham
Anna Enright	Lucille Gansen	Dan Dunton	Willis Riley	Gerald McGrane	James Friedhoff
Harry Kane	Gertrude Gleason	Wilhemina Hillsman	Irene Shanley	Raphael O'Brien	Raymond Hanrahan
Frances McGourty	Angela Keefe	Catherine Clark	Edwin Rubley	Joe Palmersheim	Russell Murphy
Nellie Riley	Delia McGrane	Sara Martin	Virgil Sullivan	Mary Perry	Norbert Biwer
	Donald Murray	Regina Brophy		Floris Regan	Harold Stapleton
1916	James Smith	Harold Kirst	1929	Helen Schmelzer	Ed Beecher
Marguerite Kennedy	1922	LaVonne McGrane	Alice Rice	Norbert Showalter	Paul Fogarty
Helen McGrane	Harriet O'Donnell	Raymond Murray	Walter A. Riley	Donald Sullivan	
Vinette McGrane	Kathleen Conway	Jerome Foley	Theresa Rosonke	Lawrence Sullivan	1936
Sara Biwer	Marie Fitzgerald	Geraldine Kennedy	Linus Showalter	1933	Margaret Biever
Hazel Clark	Teresa Madden		John Whalen	Audrey Birmingham	Agnes Budke
Regina Kelly	Regina Younker	1926	Alice Biwer	George Budke	James Conway
Julia Dunn	Clara Monaghan	Leila Keefe	Emma Novy	Vincent Freidhof	Vincent Freidhof
Clifford Keefe	Bernadette McGrane	Ellen Garmen	Gladys Regan	Marcella Gardner	Marcella Gardner
	Agnes Shanley	Lila Sullivan	Louis Cashman	Donald Keefe	Donald Keefe
1917	Urban Conway	Helen Frank	Eugene Fogarty	Elizabeth Kobliska	Elizabeth Kobliska
Earl Kelly	Lloyd Kirst	Alice Clynch	Marcella Gansen	Lucille Kobliska	Lucille Kobliska
Terrence Cannon			Clarence Mulick	Donald Lentz	Donald Lentz
Nina Condon			John Murray		

Adrian McGrane	Rose Schwickerath	Georgine Klobassa	Patsy Papach	1955	Charles Boyle
Muriel McAvoy	Donald Heineman	Maxine Klobassa	Kathleen Regan	Melvin Bayer	Mary Ann Chambers
Ilene Riley	Lorraine Stapleton	George Lammers		Marie Biwer	William Chihak
Marcella Swehla	Dan Showalter	Darlene Marr	1951	Muriely Burke	Linda Conway
Richard Zak	Arnold Maravetz	Myrna McGrane	Phyllis Biwer	Shirley Burke	Marilee Conway
Harrison Silver	Dan Casey	LeRoy Mohrfeld	Madonna Boyle	Marcella Chihak	Judith Freidhof
	Maurice Silver	Frances Riley	Donald Burke	Mary Dunn	Norma Gansen
1937	Mildred Ludwig	Robert Rink	Marilyn Burke	Dorothy Gansen	Bernard Hartogh
Ed Fogarty	Mila Kobliska	Rose Marie Sullivan	James Clark	James Gansen	Wayne Jacoby
Marguerite Sullivan	Neil Cashman		Thomas Fogarty	Katherine Gansen	James Kinney
Robert Kelly	George Sullivan	1946	Richard Gleason	Margaret Gansen	John Lentz
Bernard Beecher	Wallace Fair	Carl Richmond	Arlene Hartogh	Leon Hartogh	Sharon Lohuis
Elmer Morman		Mary Ann Busch	Marie Heineman	Louis Lentz	John Ludwig
Gerald Regan	1941		Francis Jacoby	Margaret Lohuis	Merle McGrane
James Cashman	Irene Joerger	1947	Marisa Kelly	James Roethler	Eugene O'Donnell
Mae Alyce Silver	Ralph Fencil	Marjorie Shannon	Marita Kelly	Joanne Sullivan	Tom Palmersheim
Mercedes Meirick	Bill Clark	Delores Younker	William Kuhn		Elizabeth Recker
Ray Heineman	Paul Shannon	Lucille Stevens	Rosemary Mohrfeld	1956	Antoinette Schissel
Marcene Showalter	Mildred Tuckek	Avis Balk	Leon Murphy	Elaine Biwer	Barbara Schnurr
Joe O'Neil		Catherine Chihak	Rita Palmersheim	Matthew Biwer	Dennis Semerad
Robert Galligan	1942	John Ptacek	Joanne Rosonke	Judy Boyle	Catherine Zeimetz
Lorraine Stute	Gerald Pospichal	Kathleen McGee	Richard Semerad	Mary Fitzgerald	
	Francis Klobassa	Helen Kuhn	Leon Sullivan	Joan Heineman	1960
1938	Madonna Fogarty	Mary Ann Biwer	Velmar Voves	Adolph Havlik	Joe Birmingham
Robert Murphy	Marjorie Delurey	Francis Stute	LuAnn Beecher	Richard Jacoby	Dorothy Biwer
Fred Gardner	Betty McAvoy	Nick Gansen		Carol Kinney	Roger Biwer
Alfred Heineman	Gene Bigley	Mary Ann Kuhn	1952	Linus Lentz	Betty Chambers
Harry Pardee	Darlene Murphy	Bernice Boyle	Robert Burke	Josephine Ludwig	Jeanne Chihak
Richard Conway	Alphonse Birmingham	Walter Kobliska	Evelyn Chihak	Joseph McGrane	Tom Corrick
Parmilla Morman	Marie Lentz	Gerald Gansen	Lois Gansen	Francis Nibaur	Darlene Dusheck
Clementine Lenehan	John Heineman	Jack Lammers	Dolores Jacoby	Russell O'Donnell	Kenneth Fangman
Dean Garrett	Betty Sullivan	Jack Sullivan	Jack Klassen	Marie Praska	Gayle Halpin
Dale Clark	Ray Freidhof	Jack Hayden	Frances Lohuis	Marge Wacha	Gary Hyberger
Ed Fencil	Vince Joerger		Jerry Mohrfeld	Marian Wacha	Dianne Kinnamon
John Mulick		1948	Marlene McAvoy		Karen Klobassa
Delberta Joerger	1943	Teresa Lammers	Ronald Palmersheim	1957	Bonita Lentz
Gus O'Donnell	Jane Sullivan	Francis Ott	Raymond Ptacek	Mary Ann Bayer	James McGrane
Omer Sullivan	George Galligan	Betty Tierney	Carol Rosonke	William Biwer	Eugene Meier
Dorothy Gleason	Alva Kobliska	Carmella Althof	Gloria Shimek	Elizabeth Burke	Deanne Palmersheim
Eileen Bigley	Norma Althof	Bonnie Papach	James Showalter	Ed Conway	Kenneth Palmersheim
Mildred Keefe	Everett Showalter	Lois Oliver	Madonna Showalter	Carol Gansen	John Ries
Shirley Shaeffer	Veronica Beecher	Luva Richmond		Norbert Gansen	Beverly Ungs
Bill Beecher	Joey Kelly	Norma Jean Berry	1953	Donald Gleason	Marilyn Zeimetz
Leland Bigley	Norma Vick	Mary Chihak	John Althof	Frances Hartogh	Harvey Nelson
Ed Enloe	Willard Diesburg	Shirley Palmersheim	Betty Biwer	Jerome Jacoby	
	Phyllis Burke	Donald Marr	Margie Boyle	Charlotte Lentz	1961
1939	Betty Cashman	Paul Younker	Charlotte Burke	Mary Lohuis	Al Biwer
Dan Conway	Lois Kobliska	Alan Stevens	Glendon Burke	Betty McGrath	Leonard Beecher
Bill Galligan	Jean McAvoy	Alfred Kobliska	Kay Derenthal	Roger Nibaur	John Boyle
Joe Joerger	James Sullivan		Robert Fogarty	LeRoy Roethler	Gary Burke
Margaret Kobliska	Jerome Shannon	1949	Joe Kuhn	Donald Rosonke	Jean Burke
Elaine Kurtenback	Janice Kelly	Regina Praska	Frank Havlik	Ronald Rosonke	Elsie Chihak
Vern Murphy		Joe McAvoy	Shirley Sullivan	Leonard Semerad	Madonna Chihak
Evelyn Bieber	1944	Joe Biwer	Bob Voves	Virgil Zeimetz	Myrna Conway
Lois Cashman	Robert Jacoby	Pat Boyle	Clifford Stevens		Catherine Dunn
James Fogarty	Lee Riley	Ray Ludwig	Alfred Semerad	1958	Marjorie Fangman
Catherine Connolly	Aleatha Burke	Teresa Ptacek		James Birmingham	Richard Fausnaugh
Goldie Klobassa	Lavonne Balk	Helen Kelly	1954	James L. Burke	Wilma Fogarty
Muriel Weber	Virginia Shimek	Rita Shannon	Roger Bayer	James Chihak	Joanne Freidhof
Marge Conway	Eleanore Boyle	Mary Thompson	Tom Burke	Patricia Conway	Kenneth Hartogh
Merle McGrath	Mary Ludwig	David Pospichal	Ed Chihak	Robert Corrick	David Lammers
Ned Roche	Donna Marie Sullivan	Dick Papach	Eileen Conroy	James Gardner	Catherine McGrane
William Mealy	Mary Ellen Richmond	Norbert Burke	Pat Fitzgerald	Ronald Gebel	Ann O'Donnell
Jean Shannon	Norma Boyle	Gerald Sullivan	Cletus Gebel	Victoria Heineman	Elaine Ries
Marjorie Silver	Mary Clark	Adolph Chihak	Kenneth Gebel	John McGrane	Sandra Schnurr
Lavern Lentz	Betty Stapleton	Doris Marie Conway	Gerald Gleason	Louise Meirick	James Stapleton
Edwin Kirst		Bob Showalter	Dolores Kuhn	Robert Palmersheim	Charles Riley
John O'Donnell	1945	Marlys Mohrfeld	James McGrane	Carol Ann Riley	LuAnn Zeimetz
John Joerger	Leo Pospichal		Marilyn Mask	Judith Stapleton	David Zobeck
	Jack Burns	1950	Mary Louise Palmersheim	Myrna K. Sullivan	
1940	Dale Showalter	Joan Bode	Gary Papach	Mike Ungs	1962
Leone Shaeffer	Joe Heineman	Robert Chihak	Lois Rosonke	Madonna Womack	Loren Bayer
Merle Hayden	Geraldine Biwer	Mary Gansen	Marie Showalter	Roger Zeimetz	Dorothy Birmingham
Lee Deegan	Mary Jane Beecher	Janet Hartogh	Mary Ann Sullivan		Alice Brophy
Virginia Meirick	Marion Chihak	Beatrice Havlik	Merle Wacha	1959	Connie Conway
Joseph Regan	Joe Chihak	Kenneth Kobliska		Elaine Bayer	Joyce Fair
Bill Burke	Mary Galligan	William Ludwig		Sharon Beecher	Jerry Fitzgerald

Tom Gansen
 Raymond Kelly
 Mary Lou Kinney
 Robert Lohuis
 LaVern McGrane
 Mike Meirick
 Vickie Mullinex
 Joyce O'Donnell
 Peter Palmersheim
 Kathleen Recker
 Daniel Regan
 Paul Semerad
 Charlene Sullivan

1963
 Marlene Bayer
 Patricia Beecher
 Tom Chambers
 Jane Chihak
 Donald Conway
 John Gansen
 Madonna Fangman
 William Gardner
 Daniel Jacoby
 Kaye Halpin
 Mary Kelly
 Jane Kennedy
 Connie Kinnamon

Dan Lentz
 Tom Ludwig
 Jerry O'Donnell
 Francis Palmersheim
 Mike Showalter
 Barbara Sullivan
 Donna Unga
 Arthur Van Vyve
 Beverly Zubrod

1964
 Raymond Benson
 James Boyle
 Mike Brophy
 Virginia Chihak
 Kay Conway
 Micky Corrick
 Leo Fair
 James Fangman
 Joanne Fitzgerald
 Joseph Fitzgerald
 George Fogarty
 Irvin Friedhoff
 Kay Gardner
 Tom Gardner
 Clement Havlik
 Judy Imoehl
 Sandra Jacoby

Ralph Klobassa
 Rosemary Ludwig
 Daniel McGrane
 Dorothy Meier
 Sandra Rance
 Judy Rouchka
 Eddie Ries
 Janet Schissel
 David Shimek
 Marie Zeimetz
 Judy Zobeck

1965
 Janis Hyberger
 Bernadette Kelly
 Patricia Bigley
 Patricia Knosby
 Bob Fangman
 Rose Biwer
 Ray Chihak
 Jerry Conway
 Roger Fogarty
 Joe Fogarty
 Phillip Gansen
 Gene Havlik
 Beth Helfter
 Donna Heying
 Dennis Jacoby

Dorothy Kobliska
 LaVonne O'Donnell
 Lois O'Donnell
 Paul Ptacek
 Danny Palmersheim
 Pat Palmersheim
 Kathy Riley
 Arnold Ballew
 Tom Knecht
 Ron O'Donnell

1966
 Wayne Barrett
 Lois Bayer
 Betty Jo Beecher
 Lorraine Enloe
 Dave Fangman
 Dennis Friedhoff
 Larry Gardner
 Rick Gardner
 Merrill Havlik
 Jean Heying
 Mary Jean Jacoby
 June Kinney
 Mike Offerman
 Jerry Ptacek
 Marilyn Ries
 Jayne Riley

Tom Schroeder
 Patty Shannon
 Janet Ziemetz

1967
 Greg Gardner
 Fran Chihak
 Russ Murphy
 Diane Ptacek
 Sylvia Recker
 Mary Kay Mohrfeld
 David Jacoby
 Patty Kolbet
 Roger Palmersheim
 LeRoy Ries
 Jim Knecht
 Betty Chihak
 Richard Havlik
 John Kelly
 Rosemary Lentz
 Linda Fair
 Mary Helfter
 Kay Heying
 Bill Gansen
 Tom Bigley
 Pat Fogarty
 Mike Birmingham
 Margaret Fogarty
 Larry Frank

1968
 Patricia Enright
 Bernard Eichenberger
 Vincent Fangman
 Mary Fogarty
 Margaret Friedhoff
 Betty Havlik
 John Helfter
 Michael Heying
 Daniel Kobliska
 Dale Knecht
 Allan Meier
 Beverly Ptacek
 Lawrence Reiss
 Creighton Roethler
 Neil Rubly
 Connie Sullivan
 Michael Sullivan
 Dean Schroeder
 Patricia Kinney

We apologize if any name is in error or has been inadvertently omitted from this list.

T. H. SCULLY

General Blacksmithing and Repairing

Plowwork, Horseshoeing

Woodwork, Etc.

Shop located on Main Street Elma, Iowa

Tonsorial Parlor

WHEN in need of a smooth shave, stylish haircut or anything in the barber line, don't forget to call at

Siddall's Tonsorial Parlor

Laundry Basket Every Tuesday Main St., Elma, Ia.

Carpet Weaving

We make the carpet to fit your room. Many years' experience. Loom first door east of Hotel Kieren.

Elma, Iowa **MRS. C. W. ROWLEY**